



BioCarbon

Laminates

Breathing Sustainability

WASHROOM & LOCKER COLLECTION

CARBON NEUTRAL HIGH PRESSURE &
SOLID GRADE LAMINATES

Taking steps to reduce your carbon footprint

WASHROOM & LOCKER COLLECTION

The Washroom and Locker range provides a collection of HPL, SGL and Liscio which are suitable for cubicles, vanity units, wall panelling and many other interior applications.

Key features of the BioCarbon Laminate range

High Pressure Laminates:



Carbon Neutral



Fire Performance



Anti-Bacterial and
Anti-Microbial
Protection



Easy to Clean



Formable

Solid Grade Laminates:



Carbon Neutral



Fire Performance



Anti-Bacterial and
Anti-Microbial
Protection



Easy to Clean



High Resistance
to Impact



Moisture Resistant

Liscio:



Carbon Neutral



Fire Performance



Healing Properties



Low Light
Reflectivity



Anti-fingerprint



Soft Touch

■ Standard Feature

■ Optional Feature

A new range of laminates with built-in environmental protection

In a time when our conscience is becoming more environmentally focussed and our purchasing decisions and the impact that our choices can have on the planet is becoming more prominent, we are proud to introduce the first carbon neutral laminates to the UK and Ireland.

By producing verified documentation through a Life Cycle Analysis (LCA) and Environmental Product Declaration (EPD) from cradle-to-grave, we are able to openly share environmental data on the performance of the BioCarbon Laminates range.

Our laminates are produced in a carbon neutral manufacturing facility which monitors, controls and balances carbon emissions, reducing them to zero. Upon receipt of the materials, we then calculate the carbon emissions generated whilst handling BioCarbon Laminates and the delivery to our customers. Through our carbon management programme, we offset the carbon emissions generated by investing in carbon credits to ensure a cleaner delivery of goods, achieving carbon neutral deliveries to site.

All products conform to CE mark standards of health and safety, make use of sustainable raw materials and are available as FSC® certified* materials.

With our passion to make a difference to the environment, we are on hand to support our customers who want to continue the carbon neutrality journey.

We do this by:



Engaging in carbon off-setting through the use of renewables including hydroelectric power



Exchanging VOC-emitting resin for a water-based alternative



Countering CO₂ emissions with a reforestation tree-planting programme

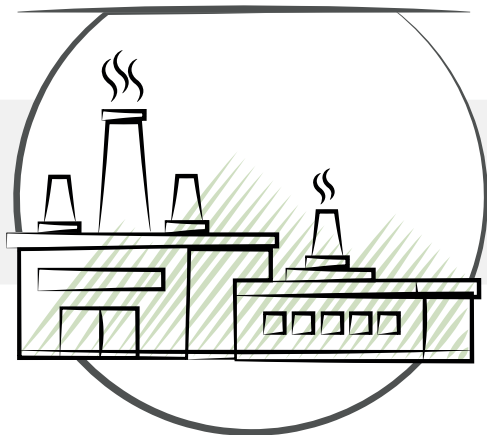


Calculate and offset the carbon emissions generated whilst the material is in our care by investing in Gold Standard carbon credits supporting global projects

OUR CARBON NEUTRAL FOOTPRINT

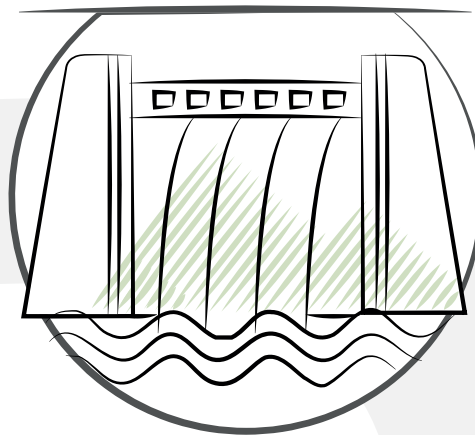
1. Manufacturing Processes

A focus on improving sustainability within our processes



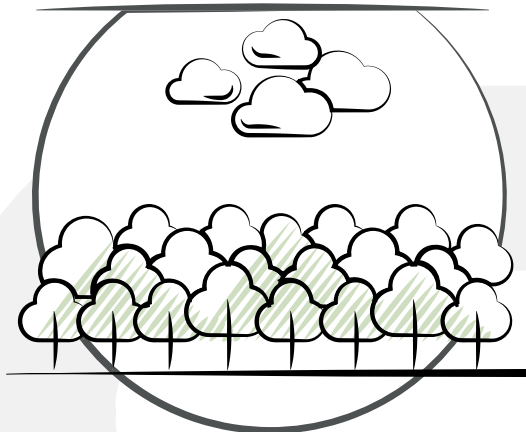
2. Energy Sources

Benefits of hydroelectric energy



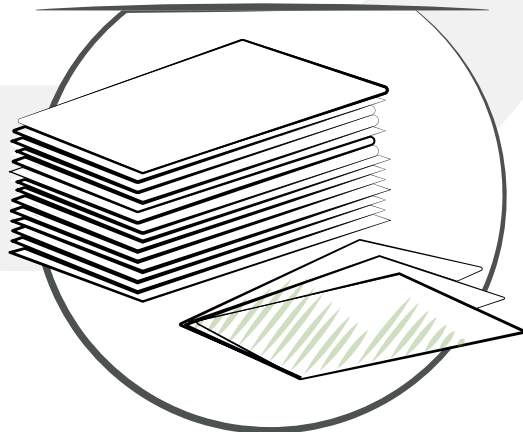
4. Carbon Offsetting

200 hectares of reforestation helps to absorb 440 tonnes of CO₂ per year



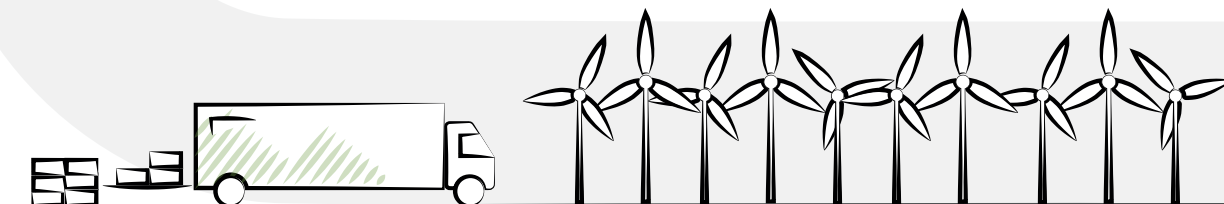
3. Materials

Continually focused on using renewable materials



5. Freight and Distribution

Investing in wind power



BioCarbon Laminates are Carbon Neutral supported by EcoAct

ecoact
an atos company

COLOUR MATCHES AND LRVs

CODE	DECOR	BS	RAL DESIGN*	NCS	PANTONE	LRV (D65/10)
BC115	Arctic White	22 B 15	–	S 0601- R	–	82
BC129	Egyptian White	–	100 93 05	S 0502-Y20R	–	83
BC142	Antique White	22 B 15	085 90 10	S 0505-Y30R	–	83
BC153	Truffle	–	060 80 10	S 3010 -Y30R	4755 C	41
BC223	Jet	00-E-53	000 15 00	S 9000 - N	Black C	4
BC229	Graphite	00 A 13	000 30 00	S 8000 - N	Cool Grey 11 C	8
BC259	Elegant Grey	BS381 626	000 65 00	S 4000 - N	422 U	34
BC264	Classic Grey	–	000 75 00	S 2500 - N	420 U	45
BC278	Luna Grey	10 A 03	000 85 00	S1502 - Y	420 U	64
BC312	Andesite	–	–	–	–	min: 2.96 max: 4.01 average: 3.57
BC342	Gabbro	–	–	–	–	min: 11.01 max: 12.57 average: 12.02
BC369	Diamond Quartz	–	–	–	–	min: 45.45 max: 50.99 average: 48.96
BC394	Alluminio	–	–	–	–	42.56
BC425	Azure	BS381 108	270 30 30	S 4550-R80B	Reflex Blue U	7
BC442	Cobalt	BS381 166	270 40 40	S 3560-R90B	2186 C	11
BC466	Crimson	04 E 56	030 40 60	S 1080 - R	199 U	14
BC469	Orange	-	050 60 70	S 1080-Y60R	Orange 021 C	24
BC478	Tropical	08 E 51	080 80 80	S 1080-Y10R	109 U	49
BC499	Lime	-	100 80 80	S 1060-G60Y	380 U	53
BC501	Carmine	BS381 454	020 60 20	S 3030 -R	500 U	27
BC529	Ballerina	02 C 33	040 90 10	S 0515-Y70R	705 C	71
BC551	Sage	–	160 60 10	S 4010-B90G	5565 U	30
BC559	Atoll	16 E 50	190 80 15	S 2020-B70G	7464 U	47
BC584	Sky	–	250 80 20	S 1030-R80B	2717 U	52
BC620	Bog Oak	–	–	–	–	7.73
BC627	Smoked Oak	–	–	–	–	min: 8.81 max: 10.02 average: 9.38
BC646	Royal Walnut	–	–	–	–	min: 5.72 max: 6.79 average: 6.36
BC670	English Oak	–	–	–	–	min: 9.63 max: 12.38 average: 11.58
BC688	Country Oak	–	–	–	–	30.4
BC690	Sawn Maple	–	–	–	–	min: 36.66 max: 39.31 average: 37.98
BC693	Washed Oak	–	–	–	–	44.64
BC709	Nero	00-E-53	000 20 00	S 8000 - N	Black C	4
BC737	Carbone	BS381 638	000 40 00	S 7002-N	2336 U	13
BC762	Fuma	10 A 03	000 80 00	S 1502-G50Y	2330 U	64
BC799	Bianca	–	110 96 02	S 0500 - N	–	93

The BS, RAL Design, NCS and Pantone references are the nearest equivalents and the LRV values have been measured in our testing laboratories and should be used for guidance only. We recommend decors should be verified visually by requesting a sample(s) to ensure true colour match to your project requirements.

*RAL Classic is available upon request.

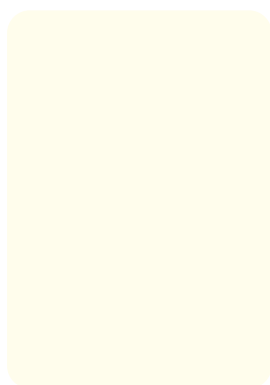
COLOUR CHART

Available in **W** Washroom and **L** Locker collections.



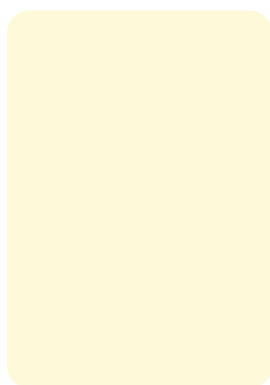
Arctic White | ES
BC115

W
HPL/SGL



Egyptian White | ES
BC129

W L
HPL/SGL



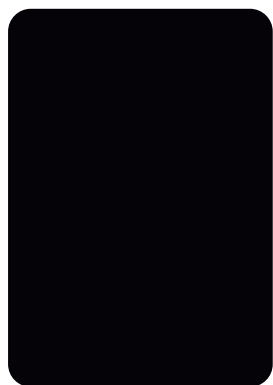
Antique White | ES
BC142

W
HPL/SGL



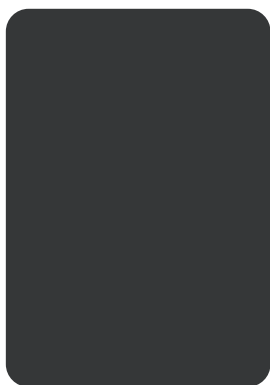
Truffle | ES
BC153

W
HPL/SGL



Jet | ES
BC223

W L
HPL/SGL



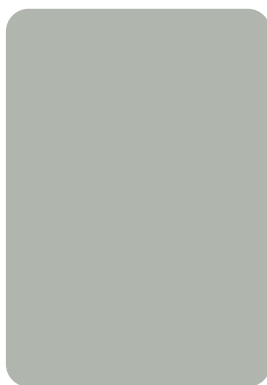
Graphite | ES
BC229

W L
HPL/SGL



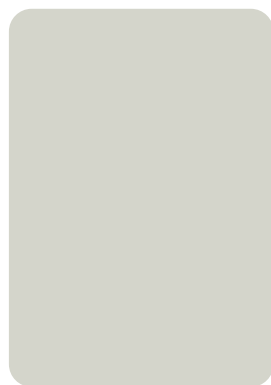
Elegant Grey | ES
BC259

W
HPL/SGL



Classic Grey | ES
BC264

W L
HPL/SGL



Luna Grey | ES
BC278

W
HPL/SGL



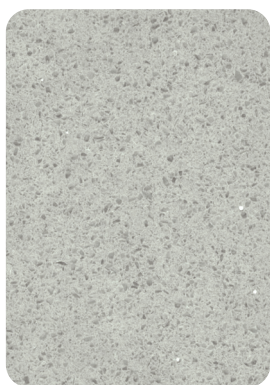
Andesite | ES
BC312

W
HPL/SGL



Gabbro | ES
BC342

W
HPL/SGL



Diamond Quartz | ES
BC369

W
HPL/SGL



Alluminio | ES
BC394

W
HPL/SGL



Azure | ES
BC425

W
HPL/SGL



Crimson | ES
BC466

W L
HPL/SGL



Orange | ES
BC469

W
HPL/SGL



Tropical | ES
BC478

W L
HPL/SGL



Lime | ES
BC499

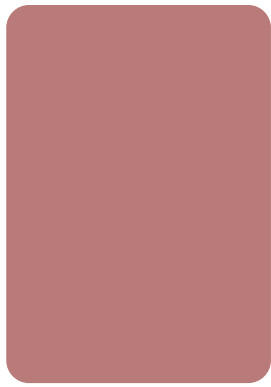
W L
HPL/SGL



Cobalt | ES
BC442

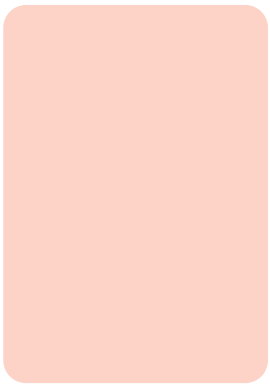
W L
HPL/SGL

BioCarbon Laminates reserve the right to change where necessary without consent or prior agreement the colours, specifications and sheet sizes etc., within the range. The samples displayed within this chart are for guidance only and actual samples are available. Contact our team to discuss your project requirements and the suitability of material selection.



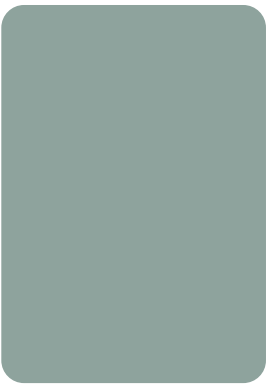
Carmine | ES
BC501

W
HPL/SGL



Ballerina | ES
BC529

W
HPL/SGL



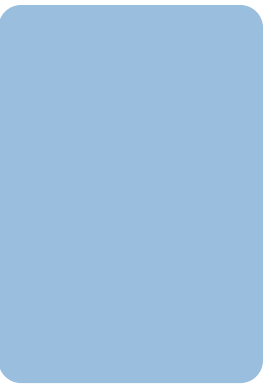
Sage | ES
BC551

W
HPL/SGL



Atoll | ES
BC559

W L
HPL/SGL



Sky | ES
BC584

W
HPL/SGL



Bog Oak | ES
BC620

W
HPL/SGL



Smoked Oak | ES
BC627

W
HPL/SGL



Royal Walnut | ES
BC646

W
HPL/SGL



English Oak | ES
BC670

W L
HPL/SGL



Country Oak | ES
BC688

W
HPL/SGL



Sawn Maple | ES
BC690

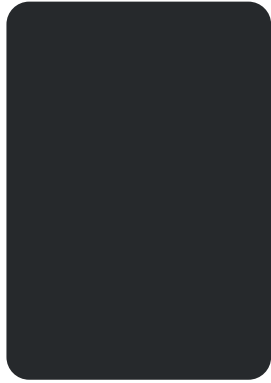
W
HPL/SGL



Washed Oak | ES
BC693

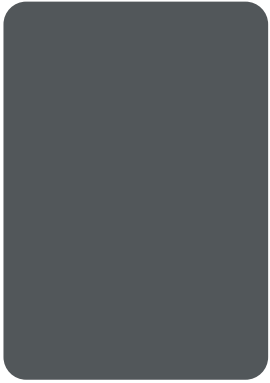
W
HPL/SGL

Liscio



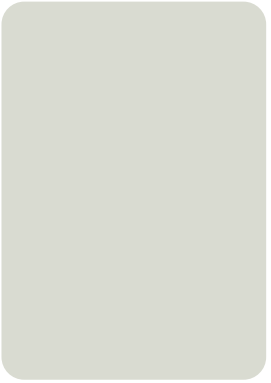
Nero | LS
BC709

W



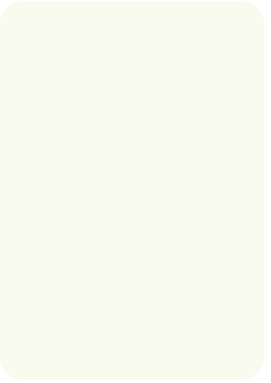
Carbone | LS
BC737

W



Fuma | LS
BC762

W



Bianca | LS
BC799

W

AVAILABILITY

	SGL			HPL	LISCIO
Thickness	10mm – 3/8"	12.5mm – 1/2"		0.7mm – 0.028"	0.9mm – 0.035"
Metric sheet sizes (L x W) mm	3660 x 1530	2440 x 1850*	3660 x 1530	3060 x 1240	3060 x 1220
Imperial sheet sizes (L x W) ft	12 x 5	8 x 6	12 x 5	10 x 4	10 x 4
Grade	FR			Standard Grade, FR Grade available as an option**	Standard Grade, FR Grade available as an option**
Finish	ES			ES	LS

CODE	DECOR	AVAILABILITY				
NEUTRALS						
BC115	Arctic White		■	■	■	
BC129	Egyptian White	■	■	■	■	
BC142	Antique White*		■	■	■	
BC153	Truffle		■	■	■	
GREYS						
BC223	Jet	■	■	■	■	
BC229	Graphite	■	■	■	■	
BC259	Elegant Grey*		■	■	■	
BC264	Classic Grey	■	■	■	■	
BC278	Luna Grey		■	■	■	
MINERALS						
BC312	Andesite*		■	■	■	
BC342	Gabbro*		■	■	■	
BC369	Diamond Quartz		■	■	■	
BC394	Alluminio		■	■	■	
PRIMARYS						
BC425	Azure		■	■	■	
BC442	Cobalt	■	■	■	■	
BC466	Crimson	■	■	■	■	
BC469	Orange		■	■	■	
BC478	Tropical	■	■	■	■	
BC499	Lime	■	■	■	■	
PASTELS						
BC501	Carmine		■	■	■	
BC529	Ballerina		■	■	■	
BC551	Sage		■	■	■	
BC559	Atoll	■	■	■	■	
BC584	Sky		■	■	■	
WOODS						
BC620	Bog Oak		■	■	■	
BC627	Smoked Oak		■	■	■	
BC646	Royal Walnut		■	■	■	
BC670	English Oak	■	■	■	■	
BC688	Country Oak		■	■	■	
BC690	Sawn Maple		■	■	■	
BC693	Washed Oak*		■	■	■	
LISCIO						
BC709	Nero					■
BC737	Carbone					■
BC762	Fuma					■
BC799	Bianca					■

Other sheet sizes are available to order please contact us for clarification.
If you require FR please state this when ordering HPL and Liscio. When ordering FSC® certified materials please ensure this is requested on your purchase order as availability on FSC® certified material may vary.
* A few decors are supplied with an 1830mm width due to current available paper size, please contact us for clarification.
_ Sheets sizes may be marginally larger than those listed, but will be no smaller than the published sheet sizes and their specific tolerances.
** Fire Retardant Grade (FR) for HPL and Liscio available on request - To achieve certificated composite Fire Performance the selection of FR grade laminate, FR grade core material including appropriate adhesive and bonding system must be carefully considered. For further advice please speak to our technical team.

BioCarbon
Laminates
Breathing Sustainability

+44 (0) 300 373 0091

support@biocarbonlaminates.com

www.biocarbonlaminates.com



www.fsc.org

FSC® C121830

The mark of
responsible forestry